

[MY ACCOUNT](#) [BLOG](#)[0 \\$ 00.00](#)[Home](#) > [Steel Adapters](#) > [NPT Pipe Fittings](#) >

5406 -NPTF PIPE HEX REDUCER BUSHING



(1) NPTF Male, (2) NPTF Female



Alternative Views:



NPTF Pipe Hex Reducer Bushing

5406 NPTF Pipe are equivalent to the following:

- * SAE 140140
- * Parker Hydraulics 0102
- * Weatherhead C3109
- * Aeroquip 2081

Available in stainless steel: SS-5406

PRESSURE
RATINGSDIMENSIONAL
DRAWINGSCROSS
REFERENCE

NPTF PIPE HEX REDUCER BUSHING

[PRINT PAGE](#)

ITEM#	ITEM NAME	OUR PRICE	QTY	
5406-04-02	5406-04-02 - Hex Reducer Bushing, 1/4" NPTF Male x 1/8" NPTF Female	\$0.46		
5406-06-02	5406-06-02 - Hex Reducer Bushing, 3/8" NPTF Male x 1/8" NPTF Female	\$0.88		
5406-06-04	5406-06-04 - Hex Reducer Bushing, 3/8" NPTF Male x 1/4" NPTF Female	\$1.05		
5406-08-02	5406-08-02 - Hex Reducer Bushing, 1/2" NPTF Male x 1/8" NPTF Female	\$1.65		
5406-08-04	5406-08-04 - Reducer Bushing, 1/2" NPTF Male x 1/4" NPTF Female	\$1.26		

5406-08-06	5406-08-06 - Reducer Bushing, 1/2" NPTF Male x 3/8" NPTF Female	\$1.18		
5406-12-02	5406-12-02 - Hex Reducer Bushing, 3/4" NPTF Male x 1/8" NPTF Female	\$3.63		
5406-12-04	5406-12-04 - Hex Reducer Bushing, 3/4" NPTF Male x 1/4" NPTF Female	\$1.73		
5406-12-06	5406-12-06 - Hex Reducer Bushing, 3/4" NPTF Male x 3/8" NPTF Female	\$1.98		
5406-12-08	5406-12-08 - Hex Reducer Bushing, 3/4" NPTF Male x 1/2" NPTF Female	\$1.71		
5406-16-02	5406-16-02 - Hex Reducer Bushing, 1" NPTF Male x 1/8" NPTF Female	\$7.33		
5406-16-04	5406-16-04 - Hex Reducer Bushing, 1" NPTF Male x 1/4" NPTF Female	\$5.20		
5406-16-06	5406-16-06 - Hex Reducer Bushing, 1" NPTF Male x 3/8" NPTF Female	\$3.37		
5406-16-08	5406-16-08 - Hex Reducer Bushing, 1" NPTF Male x 1/2" NPTF Female	\$3.31		
5406-16-12	5406-16-12 - Hex Reducer Bushing, 1" NPTF Male x 3/4" NPTF Female	\$2.85		
5406-20-04	5406-20-04 - Hex Reducer Bushing, 1-1/4" NPTF Male x 1/4" NPTF Female	\$9.32		
5406-20-06	5406-20-06 - Hex Reducer Bushing, 1-1/4" NPTF Male x 3/8" NPTF Female	\$10.82		
5406-20-08	5406-20-08 - Hex Reducer Bushing, 1-1/4" NPTF Male x 1/2" NPTF Female	\$5.73		
5406-20-12	5406-20-12 - Hex Reducer Bushing, 1-1/4" NPTF Male x 3/4" NPTF Female	\$5.27		
5406-20-16	5406-20-16 - Hex Reducer Bushing, 1-1/4" NPTF Male x 1" NPTF Female	\$4.98		
5406-24-04	5406-24-04 - Hex Reducer Bushing, 1-1/2" NPTF Male x 1/4" NPTF Female	\$20.76		
5406-24-06	5406-24-06 - Hex Reducer Bushing, 1-1/2" NPTF Male x 3/8" NPTF Female	\$15.62		
5406-24-08	5406-24-08 - Hex Reducer Bushing, 1-1/2" NPTF Male x 1/2" NPTF Female	\$14.37		
5406-24-12	5406-24-12 - Hex Reducer Bushing, 1-1/2" NPTF Male x 3/4" NPTF Female	\$9.35		
5406-24-16	5406-24-16 - Hex Reducer Bushing, 1-1/2" NPTF Male x 1" NPTF Female	\$9.59		
5406-24-20	5406-24-20 - Hex Reducer Bushing, 1-1/2" NPTF Male x 1-1/4" NPTF Female	\$9.32		
5406-32-04	5406-32-04 - Hex Reducer Bushing, 2" NPTF Male x 1/4" NPTF Female	\$19.04		

5406-32-06	5406-32-06 - Hex Reducer Bushing, 2" NPTF Male x 3/8" NPTF Female	\$19.32		
5406-32-12	5406-32-12 - Hex Reducer Bushing, 2" NPTF Male x 3/4" NPTF Female	\$18.90		
5406-32-16	5406-32-16 - Hex Reducer Bushing, 2" NPTF Male x 1" NPTF Female	\$18.63		
5406-32-20	5406-32-20 - Hex Reducer Bushing, 2" NPTF Male x 1-1/4" NPTF Female	\$16.27		
5406-32-24	5406-32-24 - Hex Reducer Bushing, 2" NPTF Male x 1-1/2" NPTF Female	\$19.20		

Check the items you wish to purchase, then click

ADD TO CART

Features

Material: High pressure carbon steel with zinc trivalent anti-corrosion coating. SAE National Pipe Thread Fuel (NPTF/NPT) meets SAE J476 specifications and is used for petroleum and mineral oil based fluids in hydraulic applications.

Product Details

Pressure:

NPT PRESSURE RATINGS, ANSI/ASME B 31.3					
SIZE	NPT	MALE		FEMALE	
DESIGNATOR	SIZE	PSIG	BAR	PSIG	BAR
1	1/16	11000	757	6700	461
2	1/8	10000	689	6500	447
4	1/4	8000	551	6600	454
6	3/8	7800	537	5300	365
8	1/2	7700	530	4900	337
12	3/4	7300	502	4600	316
16	1	5300	365	4400	303
20	1 1/4	6000	413	5000	344
24	1 1/2	5000	344	4600	316

32

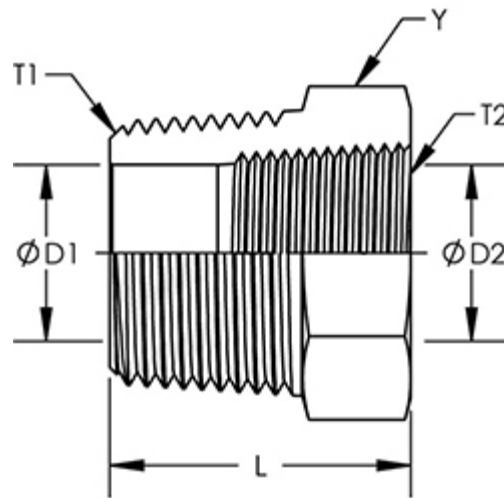
2

3900

268

3900

268

Dimensional Drawings:

Product ID	Y HEX	T1	D1	T2	D2	L
SS-5406-04-02	0.625	1/4-18	0.281	1/8-27	0.332	0.85
SS-5406-06-02	0.75	3/8-18	0.332	1/8-27	0.332	0.85
SS-5406-06-04	0.75	3/8-18	0.406	1/4-18	0.438	0.85
SS-5406-08-02	0.875	1/2-14	0.332	1/8-27	0.332	1.1
SS-5406-08-04	0.875	1/2-14	0.438	1/4-18	0.438	1.1
SS-5406-08-06	0.875	1/2-14	0.531	3/8-18	0.563	1.1
SS-5406-12-02	1.125	3/4-14	0.332	1/8-27	0.332	1.17
SS-5406-12-04	1.125	3/4-14	0.438	1/4-18	0.438	1.17
SS-5406-12-06	1.125	3/4-14	0.563	3/8-18	0.563	1.17
SS-5406-12-08	1.125	3/4-14	0.703	1/2-14	0.703	1.17
SS-5406-16-04	1.375	1-11-1/2	0.438	1/4-18	0.438	1.36
SS-5406-16-06	1.375	1-11-1/2	0.563	3/8-18	0.563	1.36
SS-5406-16-08	1.375	1-11-1/2	0.703	1/2-14	0.703	1.36
SS-5406-16-12	1.375	1-11-1/2	0.906	3/4-14	0.906	1.36
SS-5406-20-04	1.75	1-1/4-11-1/2	0.438	1/4-18	0.438	1.47
SS-5406-20-06	1.75	1-1/4-11-1/2	0.563	3/8-18	0.563	1.47
SS-5406-20-08	1.75	1-1/4-11-1/2	0.703	1/2-14	0.703	1.47
SS-5406-20-12	1.75	1-1/4-11-1/2	0.906	3/4-14	0.906	1.47
SS-5406-20-16	1.75	1-1/4-11-1/2	1.141	1-11-1/2	1.141	1.47
SS-5406-24-06	2	1-1/2-11-1/2	0.563	3/8-18	0.563	1.57
SS-5406-24-08	2	1-1/2-11-1/2	0.703	1/2-14	0.703	1.57
SS-5406-24-12	2	1-1/2-11-1/2	0.906	3/4-14	0.906	1.57

SS-5406-24-16	2	1-1/2-11-1/2	1.141	1-11-1/2	1.141	1.57
SS-5406-24-20	2	1-1/2-11-1/2	1.484	1-1/4-11-1/2	1.484	1.57
SS-5406-32-20	2.5	2-11-1/2	1.484	1-1/4-11-1/2	1.484	1.75
SS-5406-32-24	2.5	2-11-1/2	1.744	1-1/2-11-1/2	1.744	1.75

Competitor Cross Reference:

INTERCHANGEABLE WITH COMPETITOR PART NUMBERS				
PART #	AEROQUIP	PARKER	SSP	SAE
5406-04-02	259-2081-4-2	1/4 x 1/8 PTR-SS	1/4X1/8PTR	140140
5406-06-02	259-2081-6-2	3/8 x 1/8 PTR-SS	3/8X1/8PTR	140140
5406-06-04	259-2081-6-4	3/8 x 1/4 PTR-SS	3/8X1/4PTR	140140
5406-08-02	259-2081-8-2	1/2 x 1/8 PTR-SS	1/2X1/8PTR	140140
5406-08-04	259-2081-8-4	1/2 x 1/4 PTR-SS	1/2X1/4PTR	140140
5406-08-06	259-2081-8-6	1/2 x 3/8 PTR-SS	1/2X3/8PTR	140140
5406-12-02	-	3/4 x 1/8 PTR-SS	-	140140
5406-12-04	259-2081-12-4	3/4 x 1/4 PTR-SS	3/4X1/4PTR	140140
5406-12-06	259-2081-12-6	3/4 x 3/8 PTR-SS	3/4X3/8PTR	140140
5404-12-08	259-2081-12-8	3/4 x 1/2 PTR-SS	3/4X1/2PTR	140140
5406-16-02	-	1 x 1/8 PTR-SS	-	140140
5406-16-04	-	1 x 1/4 PTR-SS	1X1/4PTR	140140
5406-16-06	259-2081-16-6	1 x 3/8 PTR-SS	1X3/8PTR	140140
5406-16-08	259-2081-16-8	1 x 1/2 PTR-SS	1X1/2PTR	140140
5406-16-12	259-2081-16-12	1 x 3/4 PTR-SS	1X3/4PTR	140140
5406-20-04	-	1 1/4 x 1/4 PTR-SS	-	140140
5406-20-06	-	1 1/4 x 3/8 PTR-SS	-	140140
5406-20-08	-	1 1/4 x 1/2 PTR-SS	-	140140
5406-20-12	259-2081-20-12	1 1/4 x 3/4 PTR-SS	1-1/4X3/4PTR	140140
5406-20-16	259-2081-20-16	1 1/4 x 1 PTR-SS	1-1/4X1PTR	140140
5406-24-04	-	1 1/2 x 1/4 PTR-SS	-	140140
5406-24-06	-	1 1/2 x 3/8 PTR-SS	-	140140
5406-24-08	-	1 1/2 x 1/2 PTR-SS	-	140140
5406-24-12	259-2081-24-12	1 1/2 x 3/4 PTR-SS	-	140140
5406-24-16	259-2081-24-16	1 1/2 x 1 PTR-SS	1-1/2X1PTR	140140

5406-24-20	259-2081-24-20	1 1/2 x 1 1/4 PTR-SS	1-1/2X1-1/4PTR	140140
5406-32-06	-	-	-	140140
5406-32-08	-	-	-	140140
5406-32-12	-	2 x 3/4 PTR-SS	-	140140
5406-32-16	259-2081-32-16	2 x 1 PTR-SS	-	140140
5406-32-20	259-2081-32-20	2 x 1 1/4 PTR-SS	2X1-1/4PTR	140140
5406-32-24	259-2081-32-24	2 x 1 1/2 PTR-SS	2X1-1/2PTR	140140

Share your knowledge of this product. Be the first to write a review »

ABOUT US

- Company Info
- Contact Us
- Careers
- Reference Center

MY ACCOUNT

- View Cart
- Sign-In
- Order Status

PRODUCTS

- Product Index
- Category Index

HELPFUL INFO

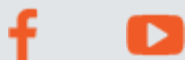
- Shipping & Returns
- Privacy Policy
- Terms & Conditions
- Warranty

QUESTIONS? CALL OR TEXT US!

Tel: (866) 620-7320
 Email: sales@hydraulicsdirect.com

Copyright 52507 Hydraulics Direct

FOLLOW US



TRUSTED SELLER

